

SAFE CLEAN WATER PROGRAM

Gateway Cities
Council of Governments
2019 Regional Conference/Retreat
June 21st 2019



Public Works
LOS ANGELES COUNTY





Regional issues... regional solution

**CAPTURE
CLEAN
CONSERVE**

1

Improve Water Quality



Increase Local Water Supply

3

Enhance Communities

County Measure

Los Angeles County Flood Control District - Measure W

Los Angeles Region's Public Health and Safe, Clean Water Program. Shall an ordinance improving/prote...

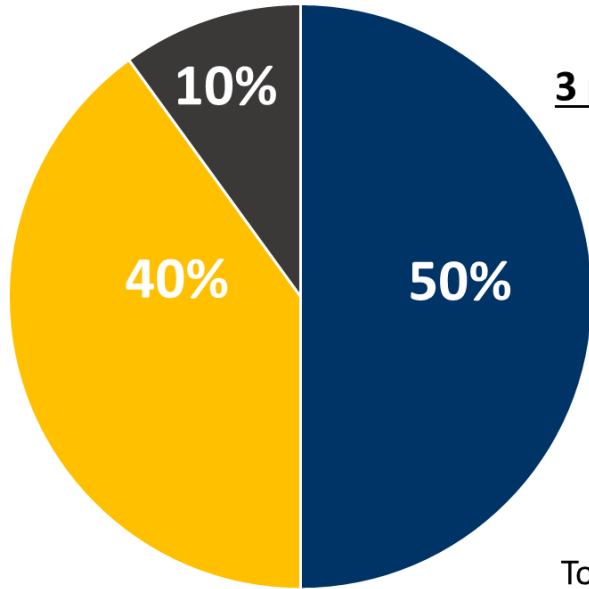


4,551 of 4,551 precincts reporting (100.0%) 2/3 of votes cast |

The public agreed
...passed with 69.5%.
Certified 11/30.



Safe, Clean Water Program



3 programs to be implemented:

- Regional Program
(50% = \$150M annually)
- Municipal Program
(40% = \$120M annually)
- FCD Program
(10% = \$30M annually)

Total Program: Approx. \$300M annually

Implementation
Ordinance by
August 1, 2019



Exemptions, Credits, and Appeals

Exemptions

- Government owned parcels
- Parcels already exempt from Ad Valorem taxes (including qualifying non-profits and other)
- Antelope Valley Watershed Area
- Low-income senior-owned parcels (*PUBLIC REVIEW*)

Credits (*PUBLIC REVIEW*)

- Tax reduction for qualifying stormwater improvements (SUSMP, IGP, LID, and equivalent)
- Up to 100% credit for qualifying additional activities

Appeals (*PUBLIC REVIEW*)

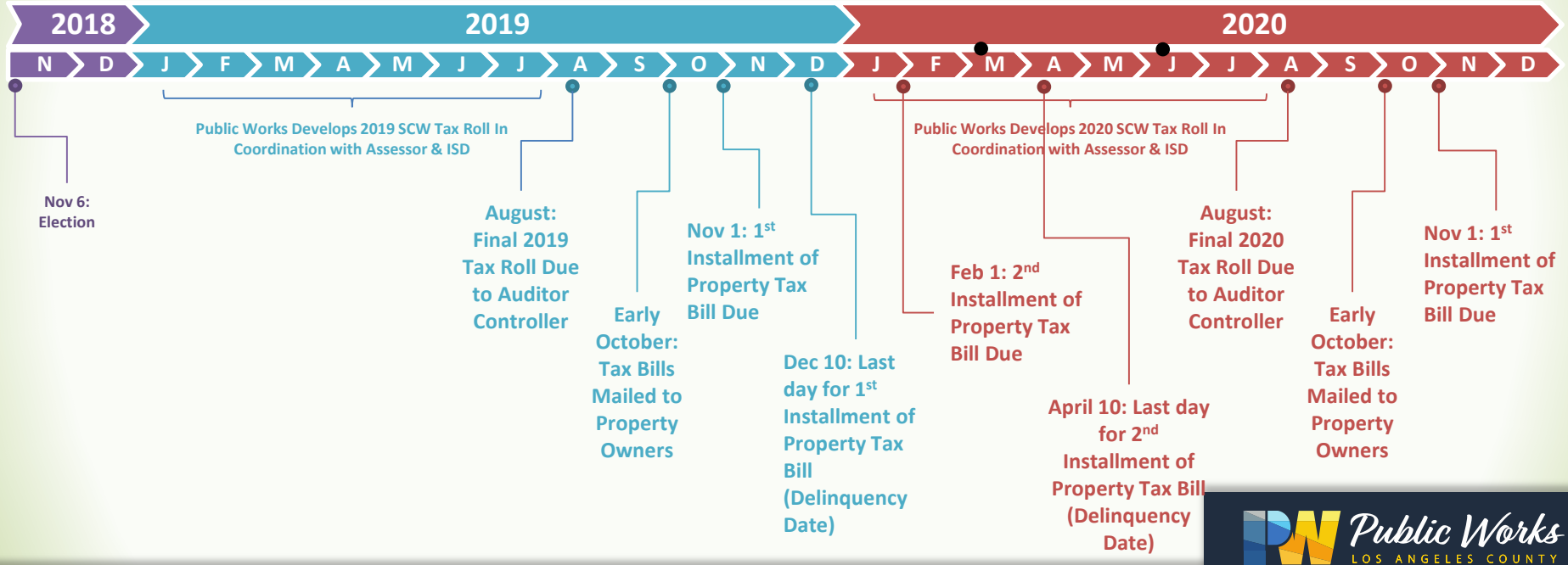
- If parcel owners feel their tax is wrong, appeals will be available
- Web tool being developed to help expedite appeals process





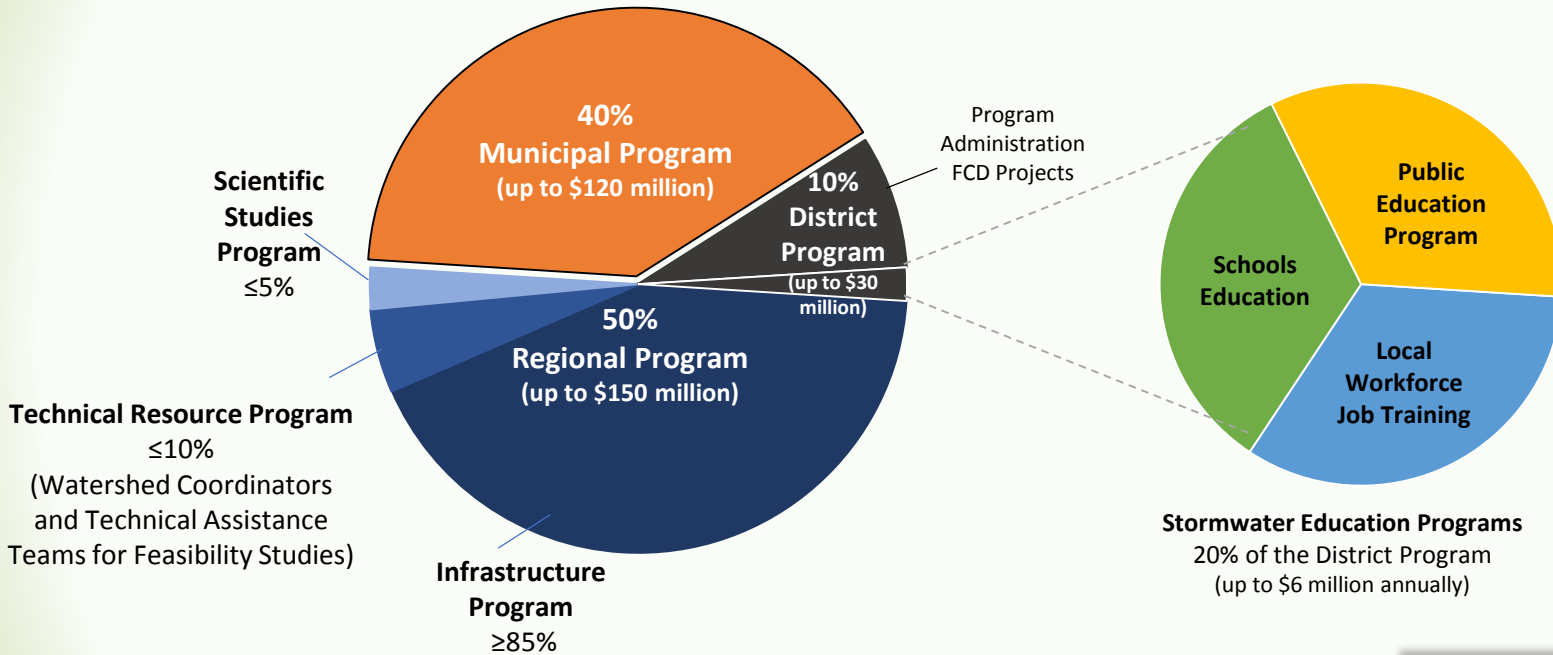
Timeline of Collection & Allocation

Tentative Allocation(s) of Tax Year 2019 (FY19-20) Revenue to Project Developers to occur in March and/or June



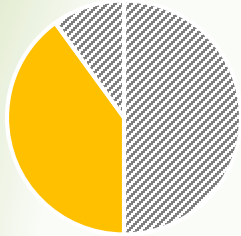


SCW Program Funding Allocation





Safe, Clean Water Program Municipal Program



**40% of total
revenue**

**...Up to \$26M annually
to Gateway COG
members!**

Agoura Hills	\$0.37M
Alhambra	\$0.90M
Arcadia	\$1.03M
Artesia	\$0.21M
Azusa	\$0.67M
Baldwin Park	\$0.75M
Bell	\$0.33M
Bell Gardens	\$0.33M
Bellflower	\$0.85M
Beverly Hills	\$0.56M
Bradbury	\$0.06M
Burbank	\$1.49M
Calabasas	\$0.48M
Carson	\$2.81M
Cerritos	\$1.03M
Claremont	\$0.61M
Commerce	\$1.30M
Compton	\$1.24M
Covina	\$0.77M
Cudahy	\$0.18M
Culver City	\$0.56M
Diamond Bar	\$0.90M

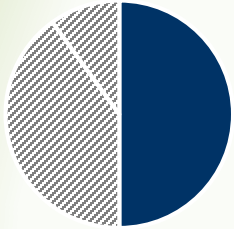
Downey	\$1.49M
Duarte	\$0.26M
El Monte	\$1.18M
El Segundo	\$0.90M
Gardena	\$0.86M
Glendale	\$1.72M
Glendora	\$0.94M
Hawaiian Gardens	\$0.13M
Hawthorne	\$0.83M
Hermosa Beach	\$0.16M
Hidden Hills	\$0.10M
Huntington Park	\$0.44M
Industry	\$1.86M
Inglewood	\$1.04M
Irwindale	\$0.51M
La Canada Flintridge	\$0.40M
La Habra Heights	\$0.18M
La Mirada	\$1.00M
La Puente	\$0.36M
La Verne	\$0.62M
Lakewood	\$1.13M
Lawndale	\$0.23M

Lomita	\$0.23M
Long Beach	\$4.86M
Los Angeles	\$37.99M
Lynwood	\$0.59M
Malibu	\$0.45M
Manhattan Beach	\$0.43M
Maywood	\$0.18M
Monrovia	\$0.54M
Montebello	\$1.00M
Monterey Park	\$0.79M
Norwalk	\$1.15M
Palmdale	\$0.00M
Palos Verdes Estates	\$0.26M
Paramount	\$0.69M
Pasadena	\$1.58M
Pico Rivera	\$0.99M
Pomona	\$2.01M
Rancho Palos Verdes	\$0.72M
Redondo Beach	\$0.76M
Rolling Hills	\$0.12M
Rolling Hills Estates	\$0.20M
Rosemead	\$0.61M

San Dimas	\$0.64M
San Fernando	\$0.28M
San Gabriel	\$0.46M
San Marino	\$0.24M
Santa Clarita	\$3.62M
Santa Fe Springs	\$1.59M
Santa Monica	\$0.83M
Sierra Madre	\$0.15M
Signal Hill	\$0.30M
South El Monte	\$0.46M
South Gate	\$1.05M
South Pasadena	\$0.26M
Temple City	\$0.46M
Torrance	\$2.50M
Unincorporated	\$12.55M
Vernon	\$1.13M
Walnut	\$0.51M
West Covina	\$1.40M
West Hollywood	\$0.27M
Westlake Village	\$0.25M
Whittier	\$1.25M



Safe, Clean Water Program Regional Program



**50% of total
Program revenue**

**...Up to \$62M annually
available to Gateway COG
region!**

WATERSHED AREA	PROJECTED ANNUAL RETURN
Central Santa Monica Bay	\$18.1 Million
Lower Los Angeles River	\$13.9 Million
Lower San Gabriel River	\$17.4 Million
North Santa Monica Bay	\$2.2 Million
Rio Hondo	\$12 Million
Santa Clara River	\$7.1 Million
South Santa Monica Bay	\$19.5 Million
Upper Los Angeles River	\$39.9 Million
Upper San Gabriel River	\$20.1 Million

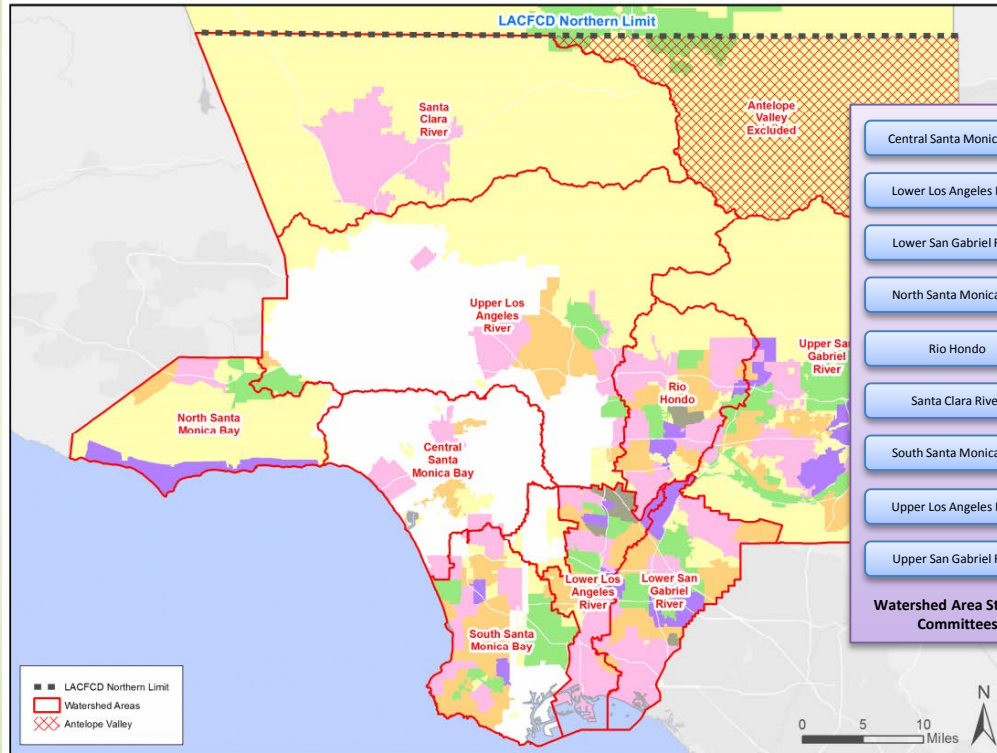


Regional Program

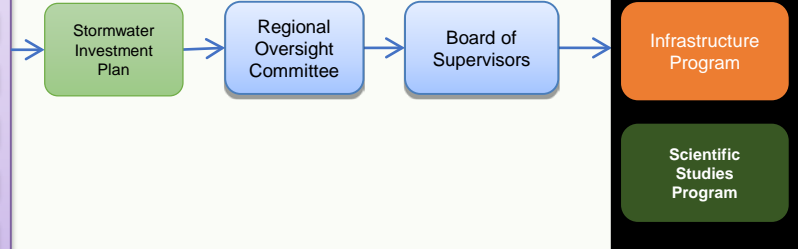
WATERSHED AREA STEERING COMMITTEES										
	Central Santa Monica Bay	Lower Los Angeles River	Lower San Gabriel River	North Santa Monica Bay	Rio-Hondo	Santa Clara River	South Santa Monica Bay	Upper Los Angeles River	Upper San Gabriel River	
Supervisory Districts within Watershed Area (with % of Tax Impervious Area by SD)	2nd (48%) 3rd (42%) 1st (5%) 4th (5%)	1st (47%) 4th (33%) 2nd (20%)	4th (95%) 1st (5%)	3rd (100%)	5th (60%) 1st (40%)	9th (100%)	4th (53%) 2nd (47%)	3rd (49%) 5th (29%) 1st (14%) 2nd (9%)	1st (63%) 5th (22%) 1st (15%)	
Municipal Representation (Self-selecting process to occur in January/February 2019)										
Municipal Representation (7 seats)	Los Angeles (ALL) 77% 3 Santa Monica (3) 6% 1 El Segundo (4) 4% 1 Culver City (2) 4% 1 Beverly Hills (3) 4% 1 Inglewood (2) 2% Unincorporated (ALL) 2% 1 West Hollywood (3) 2%	Bell Gardens (1) 3% Bell (1) 3% Pico Rivera (1) 2% Cudahy (1) 2% Maywood (1) 2% Signal Hill (4) 1% 1 Carson (2) 0% Lakewood (4) 0%	Long Beach (4) 22% 1 Commerce (1) 11% 1 Compton (2) 11% Vernon (1) 10% 1 South Gate (1) 9% 1 Downey (4) 6% 1 Lynwood (2) 5% 1 Huntington Park (1) 4% Paramount (4) 4% Unincorporated 4% Bell Gardens (1) 3% Downey (4) 6% 1 Bellflower (4) 6% 1 Pico Rivera (1) 5% Paramount (4) 2% Artesia (4) 2% Signal Hill (4) 1% 1 Signal Hill (4) 1% Hawaiian Gardens (4) 1%	Long Beach (4) 17% 1 Santa Fe Springs (4) 11% 1 Whittier (4) 9% 1 Norwalk (4) 8% 1 Lakewood (4) 8% 1 Unincorporated 7% Cerritos (4) 7% 1 La Mirada (4) 7% Downey (4) 6% 1 Bellflower (4) 6% 1 Pico Rivera (1) 5% Paramount (4) 2% Artesia (4) 2% La Habra Heights (4) 1% Hidden Hills (3) 1% 1 Los Angeles (ALL) 0%	Unincorporated (ALL) 29% 2 Malibu (3) 25% 1 Agoura Hills (3) 21% 1 Westlake Village (3) 14% 1 Calabasas (3) 10% 1 Hidden Hills (3) 1% 1 Los Angeles (ALL) 0%	Pasadena (5) 14% 1 Unincorporated (ALL) 11% 1 Arcadia (5) 10% 1 Borwickello (1) 10% El Monte (1) 9% Monterey Park (1) 7% 1 Rosemead (1) 6% Alhambra (5) 6% 1 Rosemead (5) 6% 1 San Gabriel (5) 5% Temple City (5) 5% South El Monte (1) 4% San Marino (5) 3% Sierra Madre (5) 2% 1 Duarte (5) 2% Inwendale (1) 1% Bradbury (5) 0% South Pasadena (5) 0%	Los Angeles (ALL) 19% 1 Carson (2) 18% 1 Torrance (4) 16% 1 Unincorporated (ALL) 10% 1 El Monte (1) 9% Hawthorne (2) 5% 1 Redondo Beach (4) 5% Inglewood 5% Rancho Palos Verdes 5% Manhattan Beach (4) 3% 1 El Segundo (4) 2% Palos Verdes Estates 2% 1 Lomita (4) 2% Lawndale (2) 1% Rolling Hills Estates 1% Hermosa Beach (4) 1% Rolling Hills (4) 1% Compton (2) 0%	Los Angeles (ALL) 75% 3 Unincorporated (ALL) 8% 1 Glendale (5) 5% 1 Burbank (5) 5% La Canada Flintridge 5 1% 1 Pasadena (5) 1% Calabasas (3) 1% Alhambra (5) 1% San Fernando (3) 1% South Pasadena (5) 1% Monterey Park (1) 0% Burbank (5) 0% Santa Clarita (5) 0%	Unincorporated 19% 1 Pomona (1) 13% 1 Industry (1) 11% 1 West Covina (1) 9% Glendora (5) 6% 1 Diamond Bar (4) 6% Covina (5) 5% Baldwin Park (1) 5% 1 Claremont (1) 4% Azusa (1) 4% La Verne (5) 4% San Dimas (5) 4% 1 Walnut (1) 3% Inwendale (1) 3% La Puente (1) 2% El Monte (1) 2% Duarte (5) 1% 1 South El Monte (1) 0% Bradbury (5) 0% Arcadia (5) 0% Monrovia (5) 0%	
LACFGD	FCD	FCD	FCD	FCD	FCD	FCD	FCD	FCD	FCD	FCD
Water Agency	LA-DWP	Central Basin	Central Basin	Las Virgenes	Upper San Gabriel District	Santa Clarita Valley Water Agency	West Basin	LA-DWP	Upper San Gabriel District	
Ground Water / Water Agency 2	West Basin	Water Replenishment District	Water Replenishment District	County-Waterworks District	Main San Gabriel Basin	GSA for the Santa Clara River Valley	Water Replenishment District	LA-DWP	Main San Gabriel Basin	
Sanitation	LA-SAN	San Districts	San Districts	Las Virgenes	San Districts	San Districts	San Districts	LA-SAN	San Districts	
Municipal Parks / Open Space	LA Rec & Parks	City of Long Beach Parks and Recreation	City of Long Beach Parks and Recreation	Mountains Recreation and Conservation Authority	City of Pasadena Parks and Recreation	City of Santa Clarita Parks and Recreation	LA Rec & Parks	LA Rec & Parks	County Parks and Rec	
Business	Appointed by BoS	Appointed by BoS	Appointed by BoS	Appointed by BoS	Appointed by BoS	Appointed by BoS	Appointed by BoS	Appointed by BoS	Appointed by BoS	
Environmental Justice	Appointed by BoS	Appointed by BoS	Appointed by BoS	Appointed by BoS	Appointed by BoS	Appointed by BoS	Appointed by BoS	Appointed by BoS	Appointed by BoS	
Environment	Appointed by BoS	Appointed by BoS	Appointed by BoS	Appointed by BoS	Appointed by BoS	Appointed by BoS	Appointed by BoS	Appointed by BoS	Appointed by BoS	
At Large	Appointed by BoS	Appointed by BoS	Appointed by BoS	Appointed by BoS	Appointed by BoS	Appointed by BoS	Appointed by BoS	Appointed by BoS	Appointed by BoS	
At Large	Appointed by BoS	Appointed by BoS	Appointed by BoS	Appointed by BoS	Appointed by BoS	Appointed by BoS	Appointed by BoS	Appointed by BoS	Appointed by BoS	



Regional Program



- Central Santa Monica Bay
 - Lower Los Angeles River
 - Lower San Gabriel River
 - North Santa Monica Bay
 - Rio Hondo
 - Santa Clara River
 - South Santa Monica Bay
 - Upper Los Angeles River
 - Upper San Gabriel River
- Watershed Area Steering Committees**



DRAFT Documents for Review

(through **TODAY** 6/21/19)

Public Hearing on July 30th

1. Implementation Ordinance
2. Credit Program Procedures & Guidelines
3. Credit Program Web Application
4. Low-Income Senior Exemption Procedures & Guidelines
5. Low-Income Senior Exemption Application Form
6. Tax Appeals Process Tutorial
7. Feasibility Study Requirements (w/ Scoring Criteria & Project Module)
8. Watershed Area Steering Committee Operating Guidelines
9. Watershed Coordinator Scope of Work

*4 Public Review Open Houses
the week of 6/10
(South Gate, Azusa, and
Marina Del Rey)*

SafeCleanWaterLA.org/public-review-period-docs/



Flood Control Act Amendments

Chapter 16 – LA Regional Safe, Clean Water Program and Special Parcel Tax to Provide for Stormwater and Urban Runoff Capture and Reduced Stormwater and Urban Runoff Pollution

- Effective after November 2018 election
- Describes the SCW Program in alignment with AB1180
 - Expenditure plan, Provisions, Exemptions, Credit Program

Chapter 18 – Safe, Clean Water Program Implementation Ordinance

- Required adoption by August 1, 2019
- Incorporates details contained in the Program Elements

ANALYSIS

This ordinance amends the Los Angeles County Flood Control District Code by amending Chapter 16 of the Los Angeles County Flood Control District Code, relating to the Los Angeles Regional Safe, Clean Water Program, and adding Chapter 18 to the Los Angeles County Flood Control District Code, relating to Safe Clean Water Program implementation.

MARY C. WICKHAM
County Counsel

By
MARK T. YANAI
Principal Deputy County Counsel
Public Works Division

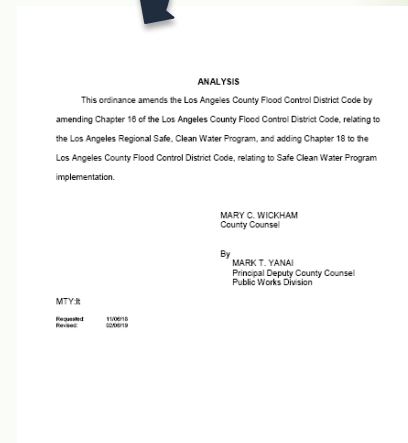
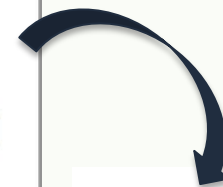
MTY:jt

Requested: 11/08/18
Revised: 02/09/19



Chapter 18 – Implementation Ordinance

- Essentially codifies the Program Elements
- Clarification/elaboration only as deemed necessary
- References external documents for:
 - Credit Program
 - Credit Trading Program
 - Low-Income Senior Exemptions
 - Tax Appeal Process
 - Committee Operating Guidelines





REVENUE

Final FY19-20 Tax Roll Submitted

FY19-20 Tax Bills Mailed

Allocations for Funding

MUNICIPAL PROGRAM

Review Period for Draft Fund Transfer Agreements

Municipalities enter into Fund Transfer Agreements

REGIONAL PROGRAM

Committee Formations

- Call for Projects
- Begin scoring Projects / Feasibility Studies
- WASCs prepare Stormwater Investment Plans (SIPs)

ROC reviews SIPs

Board approves SIPs

Project Developers enter into Transfer Agreements

DISTRICT PROGRAM

County Board of Supervisors:

- Adopts Implementation Ordinance
- Appoints committees

Release RFSQ for Watershed Coordinators*

County Board of Supervisors adopts template Fund Transfer Agreements

Initiate Stormwater Education Programs

*Funded by Regional Program

Tentative SCW Implementation Timeline

Safe, Clean Water Program

Questions?

For additional information, please contact:

SafeCleanWaterLA@pw.lacounty.gov

or

mfrary@pw.lacounty.gov

626-458-6503

www.safecleanwaterla.org

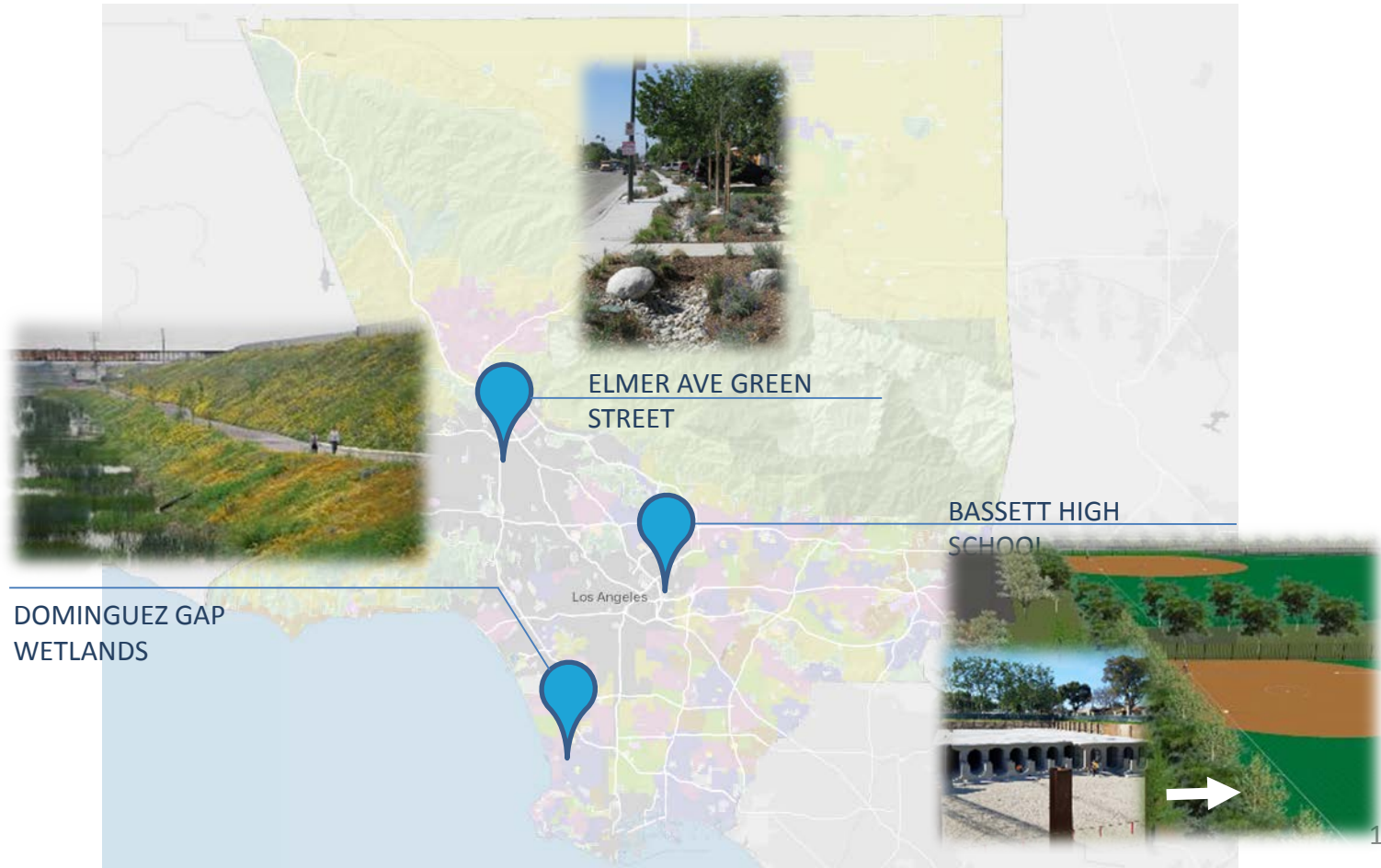


Table 1. Disadvantaged Community Population by Watershed

Watershed Area	Population*	DAC Population*	Percent DAC
Central Santa Monica Bay	1,757,708	885,846	50%
Lower Los Angeles River	895,933	607,650	68%
Lower San Gabriel River	903,045	177,905	20%
North Santa Monica Bay	71,764	0	0%
Rio Hondo	744,634	259,860	35%
Santa Clara River	286,114	23,753	8%
South Santa Monica Bay	1,003,438	342,049	34%
Upper Los Angeles River	2,969,577	1,496,863	50%
Upper San Gabriel River	1,015,552	218,467	22%
Total	9,647,765	4,012,392	42%

***These figures are based on the 2016 US Census and will be updated periodically.**


In the Regional Infrastructure program, funds for projects provided DAC Benefits must not be less than 110% of the ratio of the DAC population to the total population in each Watershed Area.




Water Resiliency Challenges

A circular inset image showing a concrete drainage grate with a white, foamy substance on top, representing pollution.

Pollution

A circular inset image showing a body of water with a red and yellow marker in the foreground, representing climate change.

Climate Change

A circular inset image showing a street with a large, dark, irregularly shaped object on the ground, representing fractured jurisdiction.

Fractured Jurisdiction

A circular inset image showing a dry, cracked landscape with a small body of water in the distance, representing reliance on imported water.

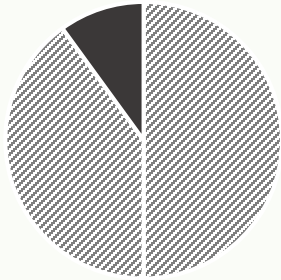
Reliance on Imported Water

A circular inset image showing a large concrete dam structure, representing limited infrastructure.

Limited Infrastructure



Safe, Clean Water Program District Program



**10% of total
Program
revenue**

- Funding provides District-wide regional support and programs.

Features

- Education programs
- Regional Studies
- Workforce training
- Technical assistance
- Administration



Credit Program

- Refined criteria for Community Investment and Additional Activities Credits
- Able to submit first-time and recertification credit applications online
- Process & timeline

For Review:

- Draft Credit Program Implementation Procedures and Guidelines
- Draft Credit Program Web Application





Low-Income Senior-Owned Exemption


- Annual hard copy application
- Assistance provided as needed
- Minimum age of owner occupant = 65
- “Low-Income Household” based on annual data from CA Dept. of Housing & Community Development

For Review:

- Draft Low-Income Senior Exemption Procedures and Guidelines
- Draft Low-Income Senior Exemption Application Form

PUBLIC REVIEW DRAFT - DO NOT FILE

County of Los Angeles
Public Works
900 S Fremont Ave, Alhambra, CA 91803
www.apwa.lacounty.gov



SAFE, CLEAN WATER PROGRAM
LOW-INCOME SENIOR-OWNED SPECIAL PARCEL TAX EXEMPTION CLAIM FORM

** For Tax Year 19-20 only, this application and all attachments must be submitted and postmarked by December 31, 2019 **

Per Section 16.08.A of the Los Angeles County Flood Control District Code: "Commencing the fiscal year 2019-20, an annual special parcel tax in the amount of two and one-half (2.5) cents per square foot of Parcel Imperviable Area, is hereby imposed upon all Parcels located within the District, except as provided in Section 16.09 of this Chapter."

Per Section 16.09 of the Los Angeles County Flood Control District Code: "The following Parcels shall be subject to exemption from the Special Parcel Tax specified in Section 16.08 of this Chapter... Upon application, low-income senior-owned Parcels."

For the purposes of the Safe, Clean Water Program:
"Low-Income Senior-Owned parcels" means Parcels within the District that are owned and occupied as a residence by individuals over the age of sixty-five (65) who are the head of a Low-Income Household.
"Low-Income Household" means a household in the District with a household income that does not exceed the Low-Income limit for Los Angeles County as determined annually by the California Department of Housing and Community Development.

Individuals that both own and reside on a residential parcel within the District, are head of household or are the sole provider of maintaining the costs of the home, and whose household income does not exceed the Low-Income limit reflected in the following table may apply for an exemption from the Safe, Clean Water Program Special Parcel Tax. For seniors that fall below the income threshold required to file a Federal or State Income Tax Return, alternative documentation will need to be provided to show that income falls below the income threshold (such as but not limited to Social Security forms, W-9 showing tax exempt status, etc.).

The parcel tax exemption claim form must be submitted on an annual basis and no later than May 1 of each tax year. An applicant must become a senior citizen prior to June 30 of the current tax year to be exempt for the following tax year.

The income limits applicable to the Low-Income Senior-Owned Parcel exemption for the 2019-20 Tax Year are reflected in the following table:

County	Income Category	Number of Persons in Household								
		1	2	3	4	5	6	7	8	
Los Angeles County	Area Median Income	27,000	33,250	39,500	45,750	52,000	58,250	64,500	70,750	77,000
	Area Median Income - 50%	13,500	16,625	19,750	22,875	26,000	29,125	32,250	35,375	38,500
Area Median Income - 60%	Area Median Income	24,300	30,150	36,000	41,850	47,700	53,550	59,400	65,250	71,100
	Area Median Income - 50%	12,150	15,075	18,000	20,925	23,850	26,775	29,700	32,625	35,550
2018 State Income Limits, California Code of Regulations, Title 25, Section 6952 (http://www.hcd.ca.gov)		18,000	22,500	27,000	31,500	36,000	40,500	45,000	49,500	54,000

Completed applications can be submitted in person, by mail, or by fax:

Mailing Address Safe, Clean Water Program, 11th Floor P.O. Box 1460 Alhambra, CA 91803-1460	In-Person Drop Off Physical Address Safe, Clean Water Program, 11th Floor 900 S. Fremont Ave. Alhambra, CA 91801
---	--

Ext: (626) 457-1526



Tax Appeals

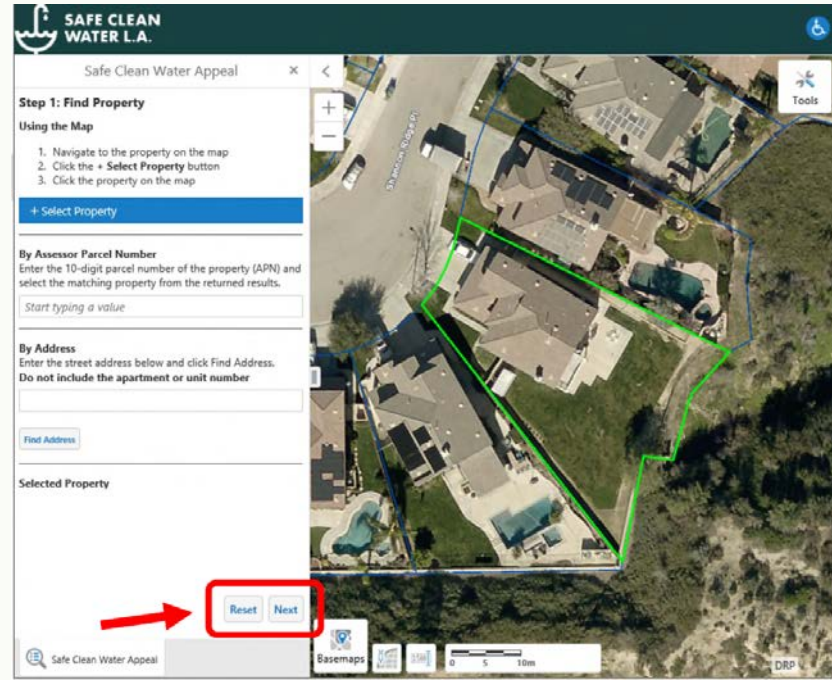
Tax appeals available for:

- Discrepancy of more than 10% error of the Impermeable Area, and
- \$50 difference in the tax amount.

Approved appeals will typically be credited to subsequent tax bill

For Review:

- Draft Tax Appeals Web-Tool (Under Development)
- Draft Tax Appeals Tutorial





Stormwater Investment Plan

- Recommended programming for the upcoming FY (collected in current FY)
 - Five-year plan includes one year of recommended budget plus projected recommendations for subsequent four years
 - Projections to remain fluid to allow for:
 - Potential change in revenue
 - New projects/concepts not previously available for consideration
 - Contingencies for programmed projects
- WASCs will apply monetary cap for 4 year projections

For Review:

- Draft WASC Operating Guidelines

	FY 2020-2021	FY 2021-2022	FY 2022-2023	FY 2023-2024	FY 2024-2025
	Budget	Projection	Projection	Projection	Projection
PROJECT – FEASIBILITY STUDY DEVELOPMENT					
TECHNICAL RESOURCES PROGRAM (up to 10%)					
Feasibility Studies/Concepts					
Watershed Coordinator(s)					
Technical Assistance Team/Feasibility Study					
Technical Assistance Team/Feasibility Study					
PROJECT – POST-FEASIBILITY STUDY					
INFRASTRUCTURE PROGRAM (not less than 85%)					
Design/Permits/CEQA Budget/Pre-project planning/grant-writing					
Project					
Project					
Project					
Right of Way Acquisition Budget					
Project					
Project					
Project					
Construction					
Project					
Project					
Project					
O&M					
Project					
Project					
Project					
NON-PROJECT ACTIVITIES					
SCIENTIFIC STUDIES PROGRAM (Up to 5%)					
Special Studies					
Project					
Project					
Monitoring					
Project					
TOTAL =					



WASC Operating Guidelines

Members will be required to agree to comply with District's Operating Guidelines

- Member Term Lengths
- Requirements, Roles, and Responsibilities
- Procedures for Meetings and Stormwater Investment Plans
- Reporting requirements

Similar Guidelines will be prepared for Regional Oversight and Scoring Committees

For Review:

- Draft Watershed Area Steering Committee Operating Guidelines



Safe, Clean Water Program Watershed Area Steering Committee Operating Guidelines

ARTICLE I. NAME OF ORGANIZATION

Safe, Clean Water Program – Watershed Area Steering Committees (WASC) shall consist of nine committees within the Los Angeles County Flood Control District.

ARTICLE II. ORGANIZATION PURPOSE

Section 1. Purpose

The purpose of the SCW Program Watershed Area Steering Committees is to recommend projects and programs to be implemented for the Regional Program consistent with the SCW Program Goals described in Chapter 16 and Chapter 18 of the Los Angeles County Flood Control District Code.

Section 2. Specific Purpose for the Operating Guidelines

These Safe, Clean Water Program Watershed Area Steering Committee Operating Guidelines (Operating Guidelines) are to provide guidance to the members of the WASC regarding the membership, responsibilities, term lengths, minimum requirements, and other operating guidelines related to how the WASC will conduct business.

ARTICLE III. REQUIREMENTS

Section 1. Committee Chair(s)

The WASC can elect its own Chair, Co-Chairs, and/or Vice-Chair to help direct meetings and process. In the absence of Chair, Co-Chairs or Vice-Chair, LA County Flood Control District (District) staff will facilitate meetings. The election of any Chair, Co-Chairs, and Vice-Chair should be revisited on an annual basis. District staff will support and Chair, Co-Chair, and/or Vice-Chair as needed and be available to address and coordinate WASC and WASC meeting logistics.



Scoring Criteria

Based on Program Elements with minor refinements.

To submit and be scored, certain information is required. Feasibility Study Requirements give details for each category plus general requirements, functional equivalence, and linkage to Projects Module.

For Review:

- Draft Feasibility Study Requirements and Scoring Criteria (Exhibit A)

Section	Score Range	Scoring Standards
A.1 Wet Weather Water Quality Benefits	50 points max	The Project provides water quality benefits A.1.1 For Wet Weather BMPs Only: Water Quality Cost Effectiveness (Cost Effectiveness) = (24-hour BMP Capacity) / (Capital Cost in \$Millions) <ul style="list-style-type: none"> <0.4 (acre feet capacity / \$-Million) = 0 points 0.4-0.6 (acre feet capacity / \$-Million) = 7 points 0.6-0.8 (acre feet capacity / \$-Million) = 11 points 0.8-1.0 (acre feet capacity / \$-Million) = 14 points >1.0 (acre feet capacity / \$-Million) = 20 points <i>1. Management of the 24-hour event is considered the maximum capacity of a Project for a 24-hour period. For water quality focused Projects, this would typically be the 85th percentile design storm capacity. Units are in acre-feet only.</i> A.1.2: For Wet Weather BMPs Only: Water Quality Benefit - Quantify the pollutant reduction (i.e., concentration, load, exceedance day, etc.) for a class of pollutants using a similar analysis as the E/WMP which uses the Districts Watershed Management Modeling System (WMMMS). The analysis should be an average percent reduction comparing influent and effluent for the class of pollutants over a ten-year period showing the impact of the Project. Modeling should include the latest performance data to reflect the efficiency of the BMP type.
	20 points max	<ul style="list-style-type: none"> Primary Class of Pollutants <ul style="list-style-type: none"> >50% = 15 points >80% = 20 points Second or 3rd Class of Pollutants <ul style="list-style-type: none"> >5% = 10 points >80% = 20 points <i>(20 Points Max)</i>
- OR -		
A.2 Dry Weather Water Quality Benefits	20 points	A.2.1: For dry weather BMPs only, Projects must be designed to capture divert 100% of all tributary dry weather flows. A.2.2: For Dry Weather or BMP Only: Tributary Size of the Dry Weather BMP <ul style="list-style-type: none"> <200 Acres = 10 points >200 Acres = 20 points
B. Significant Water Supply Benefits	25 points max	The Project provides water re-use and/or water supply enhancement benefits B1. Water Supply Cost Effectiveness: The Total Life-Cycle Cost ² per unit and/or Urban Runoff volume captured for water supply is: <ul style="list-style-type: none"> >\$2500/ac-ft = 0 points \$2,000-2,500/ac-ft = 3 points \$1500-2,000/ac-ft = 6 points \$1000-1500/ac-ft = 10 points <\$1000/ac-ft = 15 points <i>2. Total Life-Cycle Cost: The annualized value of all Capital, planning, design, construction, and total life O&M costs for the Project for the entire life's design life span should occur for 50-years of O&M. The annualized cost is to provide a preference to Projects with longer life spans.</i> B2. Water Supply Benefit Magnitude: The yearly additional water supply Project is: <ul style="list-style-type: none"> <25 ac-ft/year = 0 points 25 - 100 ac-ft/year = 2 points 100 - 200 ac-ft/year = 5 points 200 - 300 ac-ft/year = 9 points >300 ac-ft/year = 12 points
	13 points max	
	12 points max	

Section	Score Range	Scoring Standards
C. Community Investment Benefits	10 points max	The Project provides Community Investment Benefits C1. Project includes: <ul style="list-style-type: none"> One of the Community Investment Benefits identified below = 2 points Four distinct Community Investment Benefits identified below = 5 points Seven distinct Community Investment Benefits identified below = 10 points Community Investment Benefits include: <ul style="list-style-type: none"> Improved flood management, flood conveyance, or flood risk mitigation Creation, enhancement, or restoration of parks, habitat, or wetlands Improved public access to waterways Enhanced or new recreational opportunities Greening of schools Reducing local heat island effect and increasing shade (increasing the number of trees increase and/or other vegetation at the site location that will increase carbon reduction/ sequestration and improve air quality).
D. Nature-Based Solutions	15 points max	The Project implements Nature-Based Solutions D1. Project: <ul style="list-style-type: none"> Implements natural processes or mimics natural processes to slow, detain, capture, and absorb/infiltrate water in a manner that protects, enhances and/or restores habitat, green space and/or usable open space = 5 points Utilizes natural materials such as soils and vegetation with a preference for native vegetation = 5 points Removes Impervious Area from Project (1 point per 20% paved area removed) = 5 points
E. Leveraging Funds and Community Support	10 points max	The Project achieves one or more of the following: E1. Cost-Share: Additional funding has been awarded for the Project. <ul style="list-style-type: none"> >20% Funding Matched = 3 points >50% Funding Matched = 6 points E2. The Project demonstrates strong local, community-based support and/or has been developed as part of a partnership with local NSO's/NGOs.
	6 points max	
	4 points	
Total	Total Points All Sections 110	



Projects Module

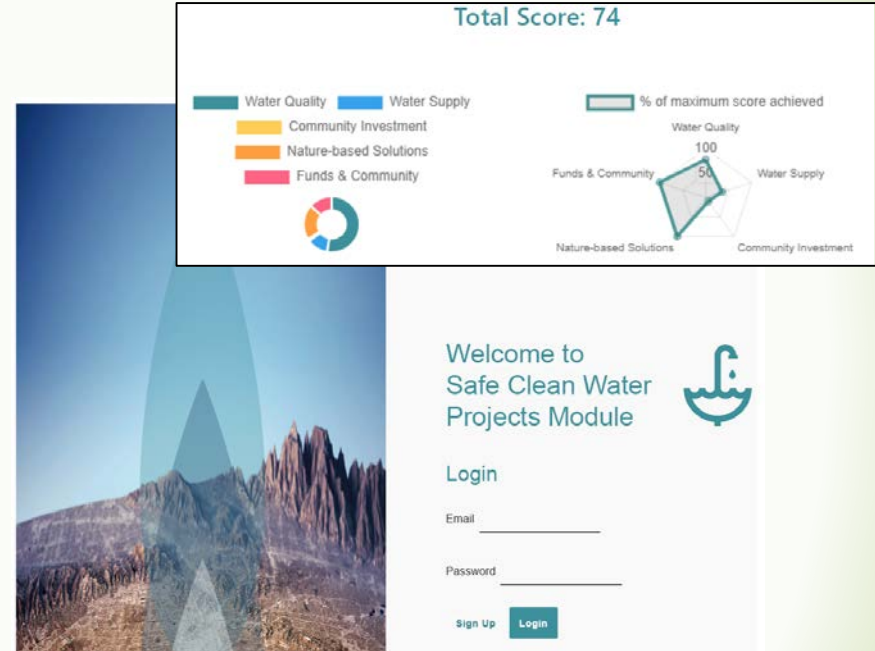
Online web-based tool for inputting all necessary data for Regional Projects or Feasibility Studies.

Template for Feasibility Studies.

Users can estimate score before submission and seek improvements.

For Review:

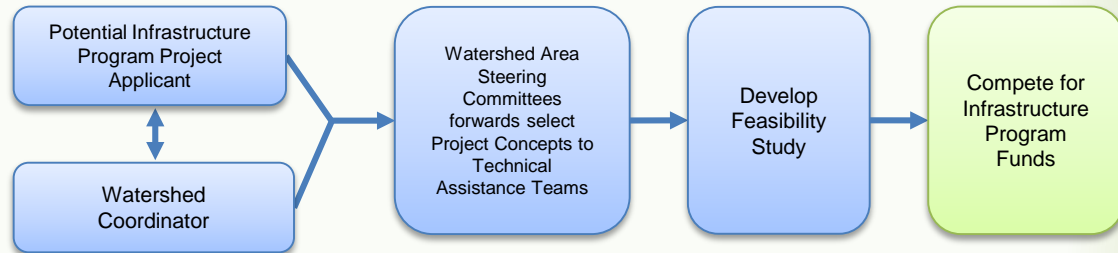
- Draft Feasibility Study Requirements and Scoring Criteria
- Draft Projects Scoring Module Example (Exhibit B)
- Draft Tax Appeals Process Tutorial





Watershed Coordinator Scope of Work

- Watershed Coordinators are part of the Technical Resources Program (budgeted on SIPs)
- 12 Watershed Coordinator Positions across 9 Watersheds
- Request for Statement of Qualifications anticipated late Summer 2019
- 11 tasks and coordination across Watersheds



Document for Review:

- DRAFT Watershed Coordinator Scope of Work